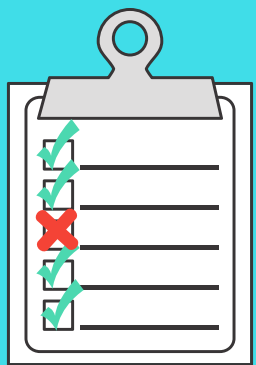
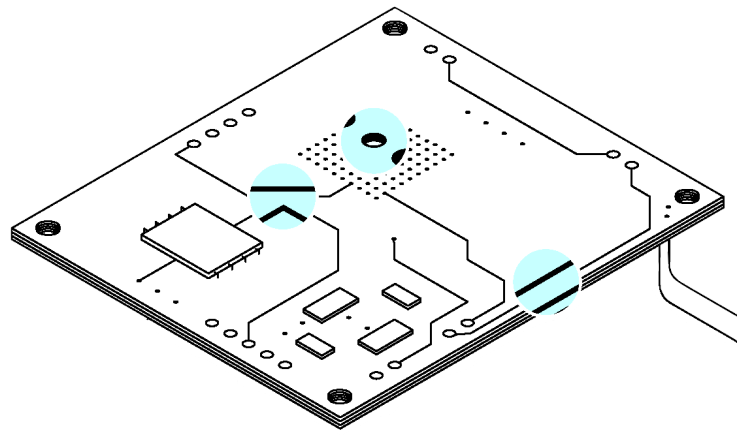


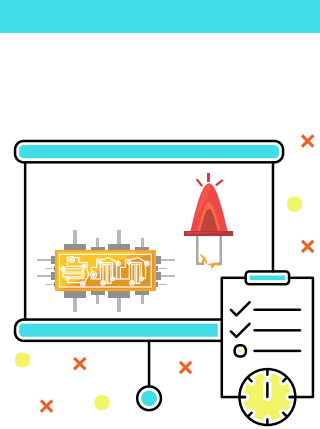
# PCB MANUFACTURING

## PROCESS OPTIMIZATION CHECKLIST



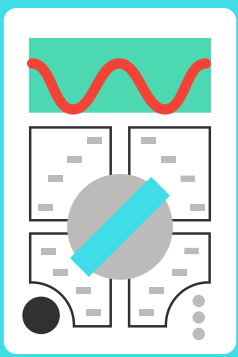
### PLANNING STAGE

- Verify that your CM is able to meet the quality control (QC) that your design requires.
- Verify that your CM is able to accommodate any special requirements, like board material or testing.



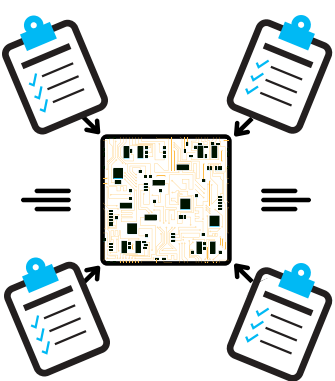
### SOURCING STAGE

- Verify that the components you select are available to your CM and validate your supply chain needs.



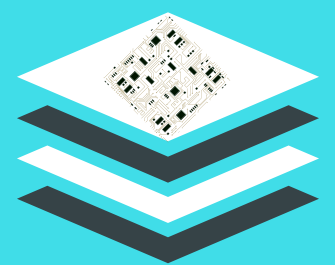
### SCHEMATIC STAGE

- Ensure that your design includes additions for any design for testing (DFT) that you need the CM to perform.



### LAYOUT STAGE

- Use DRC that is based on your CM's DFM guidelines and advice.
- Ensure that your BOM accurately matches your component footprints.
- Perform thermal analysis for manufacturing during design.



### MANUFACTURING STAGE

- Provide your CM with an accurate and complete manufacturing package in the appropriate format; including fabrication and assembly drawings.

## SUCCESS!

If you can check off all of the items in the list above, you have made a significant contribution towards optimizing the PCB manufacturing process for your boards.